

DATASHEET

GGA1 Rabbit Polyclonal Antibody

CAT. NO. APA19367

KEY FEATURES

Target	GGA1	Source / Host	Rabbit
Reactivity	Human, Mouse	Clonality	Polyclonal
Applications	WB	Conjugation	Unconjugated
Form / Buffer	Liquid in 0.42% Potassium phosphate, 0.87% Sodium chloride, pH 7.3, 30% glycerol, and 0.01% sodium azide.		Storage at -20°C

BACKGROUND

Plays a role in protein sorting and trafficking between the trans-Golgi network (TGN) and endosomes. Mediates the ARF-dependent recruitment of clathrin to the TGN and binds ubiquitinated proteins and membrane cargo molecules with a cytosolic acidic cluster-dileucine (DXLL) motif and endosomes. Mediates the ARF-dependent recruitment of clathrin to the TGN and binds ubiquitinated proteins and membrane cargo molecules with a cytosolic acidic cluster-dileucine (DXLL) motif. Mediates export of the GPCR receptor ADRA2B to the cell surface. Required for targeting PKD1:PKD2 complex from the trans-Golgi network to the cilium membrane. Regulates retrograde transport of proteins such as phosphorylated form of BACE1 from endosomes to the trans-Golgi network.

APPLICATION

To ensure optimal assay performance, AREX recommends conducting reagent titration tailored to each testing system for optimal detection results.

WB	1:500 - 1:1000
----	----------------

*Results are sample-specific. Please refer to your local assay conditions and test parameters for reference.

PRODUCT OVERVIEW

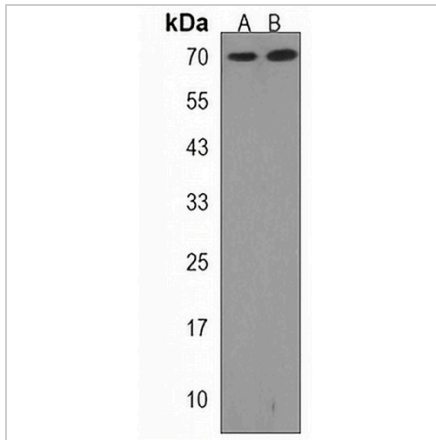
Description	Rabbit polyclonal antibody to GGA1
Specificity	Recognizes endogenous levels of GGA1 protein.
Antibody Type	Primary antibody
Immunogen	KLH-conjugated synthetic peptide encompassing a sequence within the N-terminal region of human GGA1. The exact sequence is proprietary.
Purification	The antibody was purified by immunogen affinity chromatography.
Molecular Weight	Predicted: 70 kD; Observed: 70 kD
Form/Buffer	Liquid in 0.42% Potassium phosphate, 0.87% Sodium chloride, pH 7.3, 30% glycerol, and 0.01% sodium azide.
Alternative Names	ADP-ribosylation factor-binding protein GGA1; Gamma-adaptin-related protein 1; Golgi-localized, gamma ear-containing, ARF-binding protein 1
Gene Symbol	GGA1
Entrez Gene	26088(Human); 106039(Mouse)
SwissProt	Q9UJY5(Human); Q8R0H9(Mouse)

*AREX continuously optimizes our products. Webpage content may not reflect the latest updates. For inquiries, please contact info@arexbio.com or your local distributor.

*Clone Number, Reactivity, Source/Host and Clonality can be found in the product name and Key Features section above.

DATASHEET**GGA1 Rabbit Polyclonal Antibody**

CAT. NO. APA19367

DATA

Western blot analysis of GGA1 expression in mouse kidney (A), Jurkat (B) whole cell lysates. (Predicted band size: 70 kD; Observed band size: 70 kD)

STORAGE

Store at 4°C short term. For long term storage, store at -20°C, avoiding freeze/thaw cycles.

NOTE

For Research Use Only. Not for diagnostic, therapeutics, prophylactic or in vivo use.