

DATASHEET

SLC47A2 Rabbit Polyclonal Antibody

CAT. NO. APA19385

KEY FEATURES

Target	SLC47A2	Source / Host	Rabbit
Reactivity	Rat	Clonality	Polyclonal
Applications	WB	Conjugation	Unconjugated
Form / Buffer	Liquid in 0.42% Potassium phosphate, 0.87% Sodium chloride, pH 7.3, 30% glycerol, and 0.01% sodium azide.		Storage at -20°C

BACKGROUND

This gene encodes a protein belonging to a family of transporters involved in excretion of toxic electrolytes, both endogenous and exogenous, through urine and bile. This transporter family shares homology with the bacterial MATE (multidrug and toxin extrusion) protein family responsible for drug resistance. This gene is one of two members of the MATE transporter family located near each other on chromosome 17. Alternatively spliced transcript variants encoding different isoforms have been identified for this gene.

APPLICATION

To ensure optimal assay performance, AREX recommends conducting reagent titration tailored to each testing system for optimal detection results.

WB	1:500 - 1:1000
----	----------------

*Results are sample-specific. Please refer to your local assay conditions and test parameters for reference.

PRODUCT OVERVIEW

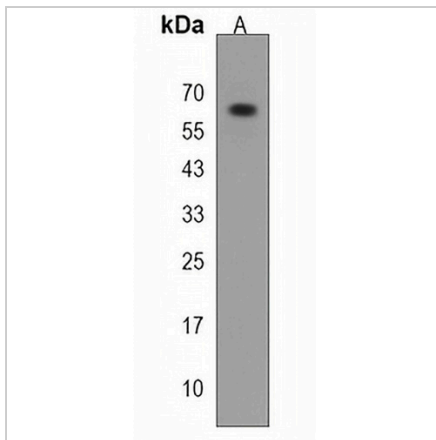
Description	Rabbit polyclonal antibody to SLC47A2
Specificity	Recognizes endogenous levels of SLC47A2 protein.
Antibody Type	Primary antibody
Immunogen	KLH-conjugated synthetic peptide encompassing a sequence within the N-terminal region of human SLC47A2. The exact sequence is proprietary.
Purification	The antibody was purified by immunogen affinity chromatography.
Molecular Weight	Predicted: 65 kD; Observed: 65 kD
Form/Buffer	Liquid in 0.42% Potassium phosphate, 0.87% Sodium chloride, pH 7.3, 30% glycerol, and 0.01% sodium azide.
Alternative Names	MATE2; Multidrug and toxin extrusion protein 2; MATE-2; hMATE-2; Kidney-specific H(+)/organic cation antiporter; Solute carrier family 47 member 2
Gene Symbol	SLC47A2
Entrez Gene	497921(Rat)
SwissProt	D4A4W2(Rat)

*AREX continuously optimizes our products. Webpage content may not reflect the latest updates. For inquiries, please contact info@arexbio.com or your local distributor.

*Clone Number, Reactivity, Source/Host and Clonality can be found in the product name and Key Features section above.

DATASHEET**SLC47A2 Rabbit Polyclonal Antibody**

CAT. NO. APA19385

DATA

Western blot analysis of SLC47A2 expression in rat kidney (A) whole cell lysates.
(Predicted band size: 65 kD; Observed band size: 65 kD)

STORAGE

Store at 4°C short term. For long term storage, store at -20°C, avoiding freeze/thaw cycles.

NOTE

For Research Use Only. Not for diagnostic, therapeutics, prophylactic or in vivo use.