

DATASHEET

VWA7 Rabbit Polyclonal Antibody

CAT. NO. APA19388

KEY FEATURES

Target	VWA7	Source / Host	Rabbit
Reactivity	Human, Mouse	Clonality	Polyclonal
Applications	WB	Conjugation	Unconjugated
Form / Buffer	Liquid in 0.42% Potassium phosphate, 0.87% Sodium chloride, pH 7.3, 30% glycerol, and 0.01% sodium azide.		Storage at -20°C

BACKGROUND

von Willebrand factor A domain-containing protein 7 (VWA7), also known as Protein G7c. Subcellular location: Secreted Tissue specificity: Expressed at low level in different cell lines

APPLICATION

To ensure optimal assay performance, AREX recommends conducting reagent titration tailored to each testing system for optimal detection results.

WB	1:500 - 1:1000
----	----------------

*Results are sample-specific. Please refer to your local assay conditions and test parameters for reference.

PRODUCT OVERVIEW

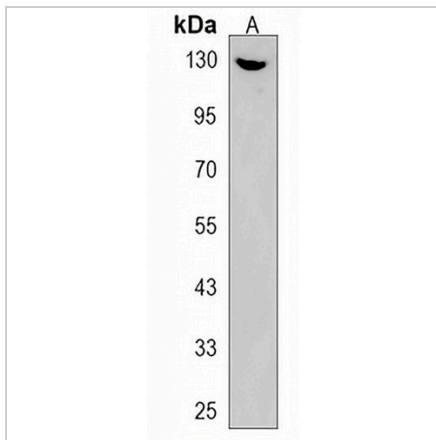
Description	Rabbit polyclonal antibody to VWA7
Specificity	Recognizes endogenous levels of VWA7 protein.
Antibody Type	Primary antibody
Immunogen	KLH-conjugated synthetic peptide encompassing a sequence within the N-terminal region of human VWA7. The exact sequence is proprietary.
Purification	The antibody was purified by immunogen affinity chromatography.
Molecular Weight	Predicted: 96 kD; Observed: 130 kD
Form/Buffer	Liquid in 0.42% Potassium phosphate, 0.87% Sodium chloride, pH 7.3, 30% glycerol, and 0.01% sodium azide.
Alternative Names	C6orf27; G7C; NG37; von Willebrand factor A domain-containing protein 7; Protein G7c
Gene Symbol	VWA7
Entrez Gene	80737(Human); 27762(Mouse)
SwissProt	Q9Y334(Human); Q9JHA8(Mouse)

*AREX continuously optimizes our products. Webpage content may not reflect the latest updates. For inquiries, please contact info@arexbio.com or your local distributor.

*Clone Number, Reactivity, Source/Host and Clonality can be found in the product name and Key Features section above.

DATASHEET**VWA7 Rabbit Polyclonal Antibody**

CAT. NO. APA19388

DATA

Western blot analysis of VWA7 expression in mouse cerebellum (A) whole cell lysates.
(Predicted band size: 96 kD; Observed band size: 130 kD)

STORAGE

Store at 4°C short term. For long term storage, store at -20°C, avoiding freeze/thaw cycles.

NOTE

For Research Use Only. Not for diagnostic, therapeutics, prophylactic or in vivo use.