

DATASHEET

PRG1 Rabbit Polyclonal Antibody

CAT. NO. APA19406

KEY FEATURES

Target	PRG1	Source / Host	Rabbit
Reactivity	Human	Clonality	Polyclonal
Applications	WB, IHC, FC	Conjugation	Unconjugated
Form / Buffer	Liquid in 0.42% Potassium phosphate, 0.87% Sodium chloride, pH 7.3, 30% glycerol, and 0.01% sodium azide.		Storage at -20°C

BACKGROUND

Postsynaptic density membrane protein that indirectly regulates glutamatergic synaptic transmission through lysophosphatidic acid (LPA)-mediated signaling pathways. Binds lysophosphatidic acid (LPA) and mediates its internalization into cells. Could act as receptor or a transporter of this lipid at the post-synaptic membrane . Modulates lysophosphatidic acid (LPA) activity in neuron axonal outgrowth during development by attenuating phospholipid-induced axon collapse .

APPLICATION

To ensure optimal assay performance, AREX recommends conducting reagent titration tailored to each testing system for optimal detection results.

WB	1:500 - 1:1000
IHC	1:50 - 1:200
FC	1:10 - 1:50

*Results are sample-specific. Please refer to your local assay conditions and test parameters for reference.

PRODUCT OVERVIEW

Description	Rabbit polyclonal antibody to PRG1
Specificity	Recognizes endogenous levels of PRG1 protein.
Antibody Type	Primary antibody
Immunogen	KLH-conjugated synthetic peptide encompassing a sequence within the C-terminal region of human PRG1. The exact sequence is proprietary.
Purification	The antibody was purified by immunogen affinity chromatography.
Molecular Weight	Predicted: 82 kD; Observed: 72 kD
Form/Buffer	Liquid in 0.42% Potassium phosphate, 0.87% Sodium chloride, pH 7.3, 30% glycerol, and 0.01% sodium azide.
Alternative Names	KIAA0455; PRG1; Lipid phosphate phosphatase-related protein type 4; Brain-specific phosphatidic acid phosphatase-like protein 1; Plasticity-related gene 1 protein; PRG-1
Gene Symbol	LPPR4
Entrez Gene	9890(Human)
SwissProt	Q7Z2D5(Human)

*AREX continuously optimizes our products. Webpage content may not reflect the latest updates. For inquiries, please contact info@arexbio.com or your local distributor.

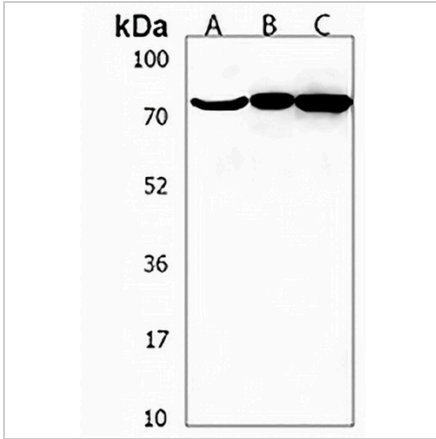
*Clone Number, Reactivity, Source/Host and Clonality can be found in the product name and Key Features section above.

DATASHEET

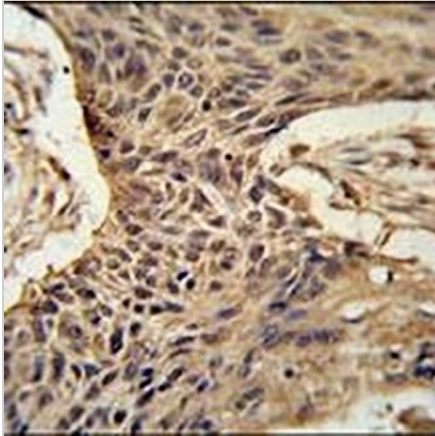
PRG1 Rabbit Polyclonal Antibody

CAT. NO. APA19406

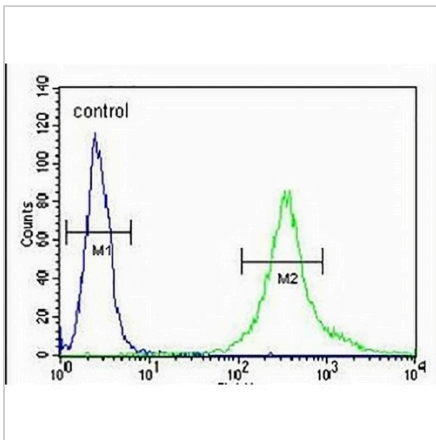
DATA



Western blot analysis of PRG1 expression in HeLa (A), Jurkat (B), NCIH460 (C) whole cell lysates. (Predicted band size: 82 kD; Observed band size: 72 kD)



Immunohistochemical analysis of PRG1 staining in human lung carcinoma formalin fixed paraffin embedded tissue section. The section was pre-treated using heat mediated antigen retrieval with sodium citrate buffer (pH 6.0). The section was then incubated with the antibody at room temperature and detected using an HRP conjugated compact polymer system. DAB was used as the chromogen. The section was then counterstained with haematoxylin and mounted with DPX.



Flow cytometric analysis of NCIH460 cells using Anti-PRG1 Antibody. The cells were fixed with 2% paraformaldehyde (10 min) and then permeabilized with 90% methanol for 10 min. The cells were incubated in 2% bovine serum albumin to block non-specific protein-protein interactions followed by the antibody at 37 °C for 60 min. The secondary antibody Goat Anti-Rabbit IgG (H&L) - AREX® Fluor 488 was incubated at 37 °C for 40 min. Isotype control antibody (blue line) was used under the same condition.

STORAGE

Store at 4°C short term. For long term storage, store at -20°C, avoiding freeze/thaw cycles.

NOTE

For Research Use Only. Not for diagnostic, therapeutics, prophylactic or in vivo use.