

DATASHEET
PTPLB Rabbit Polyclonal Antibody
CAT. NO. APA19407
KEY FEATURES

Target	PTPLB	Source / Host	Rabbit
Reactivity	Human	Clonality	Polyclonal
Applications	WB, IHC, FC	Conjugation	Unconjugated
Form / Buffer	Liquid in 0.42% Potassium phosphate, 0.87% Sodium chloride, pH 7.3, 30% glycerol, and 0.01% sodium azide.		Storage at -20°C

BACKGROUND

Catalyzes the third of the very long-chain fatty acids (VLCFA) elongation four-step cycle (condensation, reduction, dehydration, and reduction). This endoplasmic reticulum-elongation process is characterized by the addition of two carbons to the lipid chain through each cycle. This enzyme catalyzes the dehydration of the 3-hydroxyacyl-CoA intermediate into trans-2,3-enoyl-CoA, within each cycle of elongation. Therefore, it participates in the production of various VLCFAs involved in multiple biological processes as precursors of membrane lipids and lipid mediators.

APPLICATION

To ensure optimal assay performance, AREX recommends conducting reagent titration tailored to each testing system for optimal detection results.

WB	1:500 - 1:1000
IHC	1:50 - 1:200
FC	1:10 - 1:50

*Results are sample-specific. Please refer to your local assay conditions and test parameters for reference.

PRODUCT OVERVIEW

Description	Rabbit polyclonal antibody to PTPLB
Specificity	Recognizes endogenous levels of PTPLB protein.
Antibody Type	Primary antibody
Immunogen	KLH-conjugated synthetic peptide encompassing a sequence within the C-terminal region of human PTPLB. The exact sequence is proprietary.
Purification	The antibody was purified by immunogen affinity chromatography.
Molecular Weight	Predicted: 28 kD; Observed: 24 kD
Form/Buffer	Liquid in 0.42% Potassium phosphate, 0.87% Sodium chloride, pH 7.3, 30% glycerol, and 0.01% sodium azide.
Alternative Names	HACD2; Very-long-chain (3R)-3-hydroxyacyl-[acyl-carrier protein] dehydratase 2; 3-hydroxyacyl-CoA dehydratase 2; HACD2; Protein-tyrosine phosphatase-like member B
Gene Symbol	PTPLB
Entrez Gene	201562(Human)
SwissProt	Q6Y1H2(Human)

*AREX continuously optimizes our products. Webpage content may not reflect the latest updates. For inquiries, please contact info@arexbio.com or your local distributor.

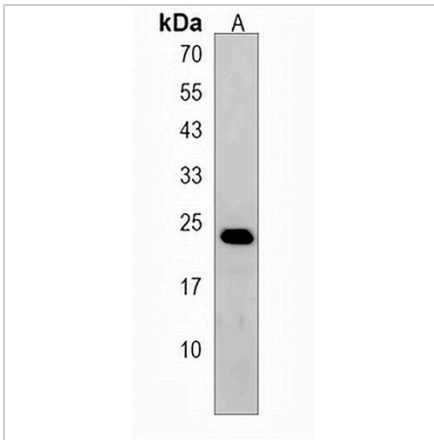
*Clone Number, Reactivity, Source/Host and Clonality can be found in the product name and Key Features section above.

DATASHEET

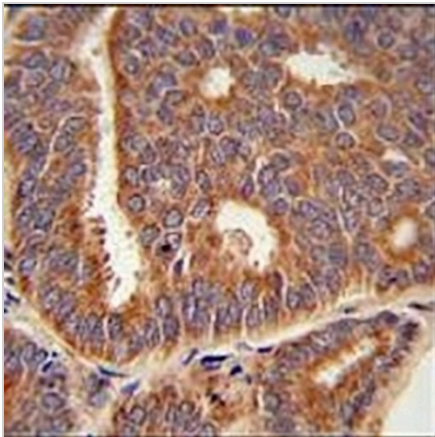
PTPLB Rabbit Polyclonal Antibody

CAT. NO. APA19407

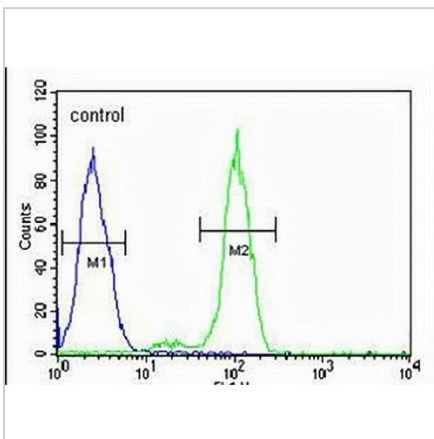
DATA



Western blot analysis of PTPLB expression in MCF7 (A) whole cell lysates. (Predicted band size: 28 kD; Observed band size: 24 kD)



Immunohistochemical analysis of PTPLB staining in human prostate carcinoma formalin fixed paraffin embedded tissue section. The section was pre-treated using heat mediated antigen retrieval with sodium citrate buffer (pH 6.0). The section was then incubated with the antibody at room temperature and detected using an HRP conjugated compact polymer system. DAB was used as the chromogen. The section was then counterstained with haematoxylin and mounted with DPX.



Flow cytometric analysis of HeLa cells using Anti-PTPLB Antibody. The cells were fixed with 2% paraformaldehyde (10 min) and then permeabilized with 90% methanol for 10 min. The cells were incubated in 2% bovine serum albumin to block non-specific protein-protein interactions followed by the antibody at 37 °C for 60 min. The secondary antibody Goat Anti-Rabbit IgG (H&L) - AREX® Fluor 488 was incubated at 37 °C for 40 min. Isotype control antibody (blue line) was used under the same condition.

STORAGE

Store at 4°C short term. For long term storage, store at -20°C, avoiding freeze/thaw cycles.

NOTE

For Research Use Only. Not for diagnostic, therapeutics, prophylactic or in vivo use.