

**DATASHEET**

**CACUL1 Rabbit Polyclonal Antibody**

CAT. NO. APA19412

**KEY FEATURES**

Target	CACUL1	Source / Host	Rabbit
Reactivity	Human, Mouse	Clonality	Polyclonal
Applications	WB	Conjugation	Unconjugated
Form / Buffer	Liquid in 0.42% Potassium phosphate, 0.87% Sodium chloride, pH 7.3, 30% glycerol, and 0.01% sodium azide.		Storage at -20°C

**BACKGROUND**

Cell cycle associated protein capable of promoting cell proliferation through the activation of CDK2 at the G1/S phase transition.

**APPLICATION**

To ensure optimal assay performance, AREX recommends conducting reagent titration tailored to each testing system for optimal detection results.

WB	1:500 - 1:1000
----	----------------

\*Results are sample-specific. Please refer to your local assay conditions and test parameters for reference.

**PRODUCT OVERVIEW**

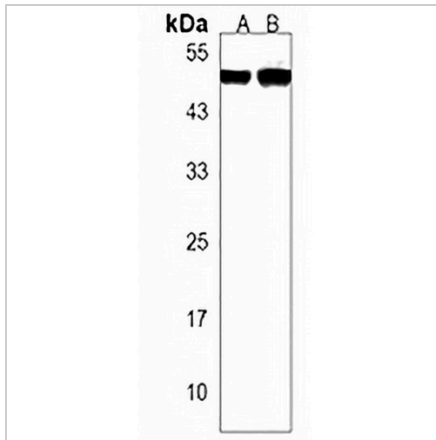
Description	Rabbit polyclonal antibody to CACUL1
Specificity	Recognizes endogenous levels of CACUL1 protein.
Antibody Type	Primary antibody
Immunogen	KLH-conjugated synthetic peptide encompassing a sequence within the C-terminal region of human CACUL1. The exact sequence is proprietary.
Purification	The antibody was purified by immunogen affinity chromatography.
Molecular Weight	Predicted: 41 kD; Observed: 52 kD
Form/Buffer	Liquid in 0.42% Potassium phosphate, 0.87% Sodium chloride, pH 7.3, 30% glycerol, and 0.01% sodium azide.
Alternative Names	C10orf46; CAC1; CDK2-associated and cullin domain-containing protein 1; Cdk-associated cullin1
Gene Symbol	CACUL1
Entrez Gene	143384(Human); 78832(Mouse)
SwissProt	Q86Y37(Human); Q8R0X2(Mouse)

\*AREX continuously optimizes our products. Webpage content may not reflect the latest updates. For inquiries, please contact [info@arexbio.com](mailto:info@arexbio.com) or your local distributor.

\*Clone Number, Reactivity, Source/Host and Clonality can be found in the product name and Key Features section above.

**DATASHEET****CACUL1 Rabbit Polyclonal Antibody**

CAT. NO. APA19412

**DATA**

Western blot analysis of CACUL1 expression in A375 (A), mouse cerebellum (B) whole cell lysates. (Predicted band size: 41 kD; Observed band size: 52 kD)

**STORAGE**

Store at 4°C short term. For long term storage, store at -20°C, avoiding freeze/thaw cycles.

**NOTE**

For Research Use Only. Not for diagnostic, therapeutics, prophylactic or in vivo use.