

DATASHEET

FAM92A1 Rabbit Polyclonal Antibody

CAT. NO. APA19426

KEY FEATURES

Target	FAM92A1	Source / Host	Rabbit
Reactivity	Human	Clonality	Polyclonal
Applications	WB, IHC	Conjugation	Unconjugated
Form / Buffer	Liquid in 0.42% Potassium phosphate, 0.87% Sodium chloride, pH 7.3, 30% glycerol, and 0.01% sodium azide.		Storage at -20°C

BACKGROUND

Plays a critical role in regulating mitochondrial ultrastructure and function by maintaining the integrity of mitochondrial morphology, particularly the organization of cristae . Preferentially binds to negatively charged phospholipids like cardiolipin and phosphatidylinositol 4,5-bisphosphate enhancing its interaction with mitochondrial membranes . Induces membrane curvature and tubulation, which are critical for maintaining mitochondrial ultrastructure and the organization of cristae . Plays a crucial role in ciliogenesis . May play a role in limb development through its role in ciliogenesis .

APPLICATION

To ensure optimal assay performance, AREX recommends conducting reagent titration tailored to each testing system for optimal detection results.

WB	1:500 - 1:1000
IHC	1:50 - 1:200

*Results are sample-specific. Please refer to your local assay conditions and test parameters for reference.

PRODUCT OVERVIEW

Description	Rabbit polyclonal antibody to FAM92A1
Specificity	Recognizes endogenous levels of FAM92A1 protein.
Antibody Type	Primary antibody
Immunogen	KLH-conjugated synthetic peptide encompassing a sequence within the Central region of human FAM92A1. The exact sequence is proprietary.
Purification	The antibody was purified by immunogen affinity chromatography.
Molecular Weight	Predicted: 33 kD; Observed: 33 kD
Form/Buffer	Liquid in 0.42% Potassium phosphate, 0.87% Sodium chloride, pH 7.3, 30% glycerol, and 0.01% sodium azide.
Alternative Names	Protein FAM92A1
Gene Symbol	FAM92A1
Entrez Gene	137392(Human)
SwissProt	A1XBS5(Human)

*AREX continuously optimizes our products. Webpage content may not reflect the latest updates. For inquiries, please contact info@arexbio.com or your local distributor.

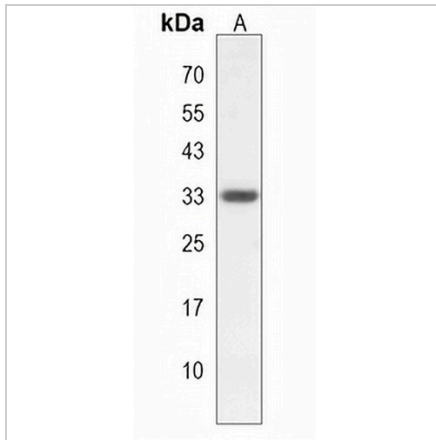
*Clone Number, Reactivity, Source/Host and Clonality can be found in the product name and Key Features section above.

DATASHEET

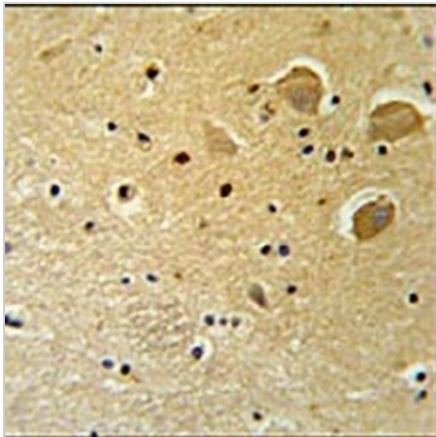
FAM92A1 Rabbit Polyclonal Antibody

CAT. NO. APA19426

DATA



Western blot analysis of FAM92A1 expression in SKBR3 (A) whole cell lysates. (Predicted band size: 33 kD; Observed band size: 33 kD)



Immunohistochemical analysis of FAM92A1 staining in human brain formalin fixed paraffin embedded tissue section. The section was pre-treated using heat mediated antigen retrieval with sodium citrate buffer (pH 6.0). The section was then incubated with the antibody at room temperature and detected using an HRP conjugated compact polymer system. DAB was used as the chromogen. The section was then counterstained with haematoxylin and mounted with DPX.

STORAGE

Store at 4°C short term. For long term storage, store at -20°C, avoiding freeze/thaw cycles.

NOTE

For Research Use Only. Not for diagnostic, therapeutics, prophylactic or in vivo use.