

DATASHEET

EMC10 Rabbit Polyclonal Antibody

CAT. NO. APA19429

KEY FEATURES

| | | | |
|---------------|---|---------------|--------------------|
| Target | EMC10 | Source / Host | Rabbit |
| Reactivity | Human | Clonality | Polyclonal |
| Applications | WB, IHC, FC | Conjugation | Unconjugated |
| Form / Buffer | Liquid in 0.42% Potassium phosphate, 0.87% Sodium chloride, pH 7.3, 30% glycerol, and 0.01% sodium azide. | | Storage at-20°C |

BACKGROUND

Part of the endoplasmic reticulum membrane protein complex (EMC) that enables the energy-independent insertion into endoplasmic reticulum membranes of newly synthesized membrane proteins that enables the energy-independent insertion into endoplasmic reticulum membranes of newly synthesized membrane proteins . Preferentially accommodates proteins with transmembrane domains that are weakly hydrophobic or contain destabilizing features such as charged and aromatic residues . Involved in the cotranslational insertion of multi-pass membrane proteins in which stop-transfer membrane-anchor sequences become ER membrane spanning helices . It is also required for the post-translational insertion of tail-anchored/TA proteins in endoplasmic reticulum membranes .

APPLICATION

To ensure optimal assay performance, AREX recommends conducting reagent titration tailored to each testing system for optimal detection results.

| | |
|-----|----------------|
| WB | 1:500 - 1:1000 |
| IHC | 1:50 - 1:200 |
| FC | 1:10 - 1:50 |

*Results are sample-specific. Please refer to your local assay conditions and test parameters for reference.

PRODUCT OVERVIEW

| | |
|-------------------|---|
| Description | Rabbit polyclonal antibody to EMC10 |
| Specificity | Recognizes endogenous levels of EMC10 protein. |
| Antibody Type | Primary antibody |
| Immunogen | KLH-conjugated synthetic peptide encompassing a sequence within the N-terminal region of human EMC10. The exact sequence is proprietary. |
| Purification | The antibody was purified by immunogen affinity chromatography. |
| Molecular Weight | Predicted: 27 kD; Observed: 30 kD |
| Form/Buffer | Liquid in 0.42% Potassium phosphate, 0.87% Sodium chloride, pH 7.3, 30% glycerol, and 0.01% sodium azide. |
| Alternative Names | C19orf63; HSM1; INM02; ER membrane protein complex subunit 10; Hematopoietic signal peptide-containing membrane domain-containing protein 1 |
| Gene Symbol | EMC10 |
| Entrez Gene | 284361(Human) |
| SwissProt | Q5UCC4(Human) |

*AREX continuously optimizes our products. Webpage content may not reflect the latest updates. For inquiries, please contact info@arexbio.com or your local distributor.

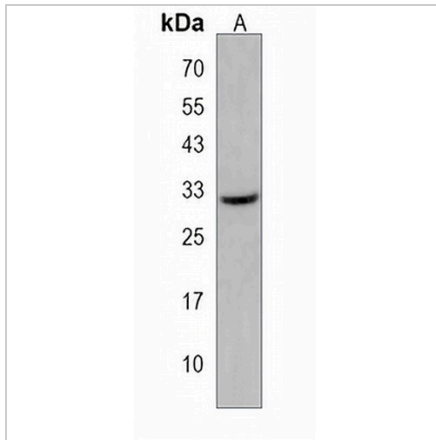
*Clone Number, Reactivity, Source/Host and Clonality can be found in the product name and Key Features section above.

DATASHEET

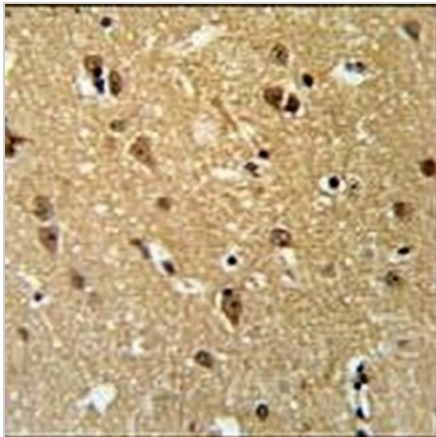
EMC10 Rabbit Polyclonal Antibody

CAT. NO. APA19429

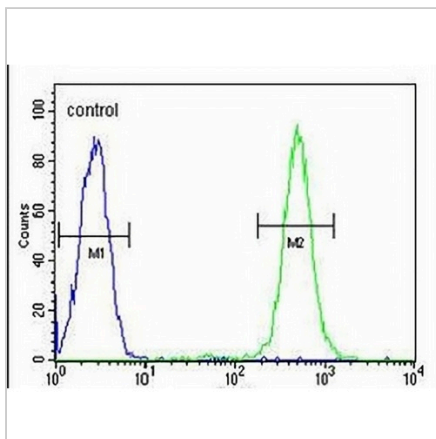
DATA



Western blot analysis of EMC10 expression in Ramos (A) whole cell lysates. (Predicted band size: 27 kD; Observed band size: 30 kD)



Immunohistochemical analysis of EMC10 staining in human brain formalin fixed paraffin embedded tissue section. The section was pre-treated using heat mediated antigen retrieval with sodium citrate buffer (pH 6.0). The section was then incubated with the antibody at room temperature and detected using an HRP conjugated compact polymer system. DAB was used as the chromogen. The section was then counterstained with haematoxylin and mounted with DPX.



Flow cytometric analysis of Ramos cells using Anti-EMC10 Antibody. The cells were fixed with 2% paraformaldehyde (10 min) and then permeabilized with 90% methanol for 10 min. The cells were incubated in 2% bovine serum albumin to block non-specific protein-protein interactions followed by the antibody at 37 °C for 60 min. The secondary antibody Goat Anti-Rabbit IgG (H&L) - AREX® Fluor 488 was incubated at 37 °C for 40 min. Isotype control antibody (blue line) was used under the same condition.

STORAGE

Store at 4°C short term. For long term storage, store at -20°C, avoiding freeze/thaw cycles.

NOTE

For Research Use Only. Not for diagnostic, therapeutics, prophylactic or in vivo use.