

**DATASHEET**

**CNOT6L Rabbit Polyclonal Antibody**

CAT. NO. APA19431

**KEY FEATURES**

Target	CNOT6L	Source / Host	Rabbit
Reactivity	Human	Clonality	Polyclonal
Applications	WB, IHC	Conjugation	Unconjugated
Form / Buffer	Liquid in 0.42% Potassium phosphate, 0.87% Sodium chloride, pH 7.3, 30% glycerol, and 0.01% sodium azide.		Storage at -20°C

**BACKGROUND**

Has 3'-5' poly(A) exoribonuclease activity for synthetic poly(A) RNA substrate. Catalytic component of the CCR4-NOT complex which is one of the major cellular mRNA deadenylases and is linked to various cellular processes including bulk mRNA degradation, miRNA-mediated repression, translational repression during translational initiation and general transcription regulation. Additional complex functions may be a consequence of its influence on mRNA expression. May be involved in the deadenylation-dependent degradation of mRNAs through the 3'-UTR AU-rich element-mediated mechanism. Involved in deadenylation-dependent degradation of CDKN1B mRNA. Its mRNA deadenylase activity can be inhibited by TOB1. Mediates cell proliferation and cell survival and prevents cellular senescence.

**APPLICATION**

To ensure optimal assay performance, AREX recommends conducting reagent titration tailored to each testing system for optimal detection results.

WB	1:500 - 1:1000
IHC	1:50 - 1:200

\*Results are sample-specific. Please refer to your local assay conditions and test parameters for reference.

**PRODUCT OVERVIEW**

Description	Rabbit polyclonal antibody to CNOT6L
Specificity	Recognizes endogenous levels of CNOT6L protein.
Antibody Type	Primary antibody
Immunogen	KLH-conjugated synthetic peptide encompassing a sequence within the C-terminal region of human CNOT6L. The exact sequence is proprietary.
Purification	The antibody was purified by immunogen affinity chromatography.
Molecular Weight	Predicted: 63 kD; Observed: 50 kD
Form/Buffer	Liquid in 0.42% Potassium phosphate, 0.87% Sodium chloride, pH 7.3, 30% glycerol, and 0.01% sodium azide.
Alternative Names	CCR4B; CCR4-NOT transcription complex subunit 6-like; Carbon catabolite repressor protein 4 homolog B
Gene Symbol	CNOT6L
Entrez Gene	246175(Human)
SwissProt	Q96LI5(Human)

\*AREX continuously optimizes our products. Webpage content may not reflect the latest updates. For inquiries, please contact [info@arexbio.com](mailto:info@arexbio.com) or your local distributor.

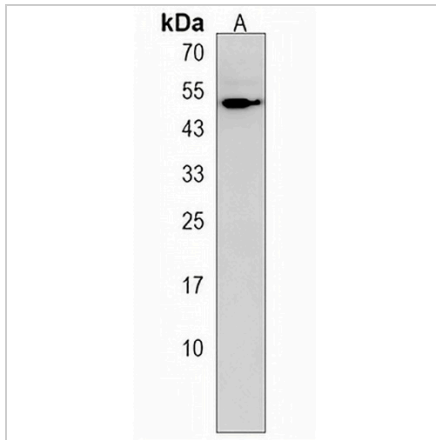
\*Clone Number, Reactivity, Source/Host and Clonality can be found in the product name and Key Features section above.

**DATASHEET**

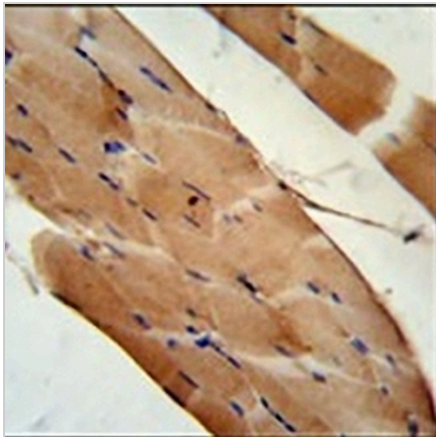
**CNOT6L Rabbit Polyclonal Antibody**

CAT. NO. APA19431

**DATA**



Western blot analysis of CNOT6L expression in SKBR3 (A) whole cell lysates. (Predicted band size: 63 kD; Observed band size: 50 kD)



Immunohistochemical analysis of CNOT6L staining in human skeletal muscle formalin fixed paraffin embedded tissue section. The section was pre-treated using heat mediated antigen retrieval with sodium citrate buffer (pH 6.0). The section was then incubated with the antibody at room temperature and detected using an HRP conjugated compact polymer system. DAB was used as the chromogen. The section was then counterstained with haematoxylin and mounted with DPX.

**STORAGE**

Store at 4°C short term. For long term storage, store at -20°C, avoiding freeze/thaw cycles.

**NOTE**

For Research Use Only. Not for diagnostic, therapeutics, prophylactic or in vivo use.