

DATASHEET

SPATC1L Rabbit Polyclonal Antibody

CAT. NO. APA19434

KEY FEATURES

Target	SPATC1L	Source / Host	Rabbit
Reactivity	Human	Clonality	Polyclonal
Applications	WB	Conjugation	Unconjugated
Form / Buffer	Liquid in 0.42% Potassium phosphate, 0.87% Sodium chloride, pH 7.3, 30% glycerol, and 0.01% sodium azide.		Storage at -20°C

BACKGROUND

Speriolin-like protein (SPATC1L), also known as Spermatogenesis and centriole-associated protein 1-like protein. Belongs to the speriolin family Subcellular location: Cytoplasm

APPLICATION

To ensure optimal assay performance, AREX recommends conducting reagent titration tailored to each testing system for optimal detection results.

WB	1:500 - 1:1000
----	----------------

*Results are sample-specific. Please refer to your local assay conditions and test parameters for reference.

PRODUCT OVERVIEW

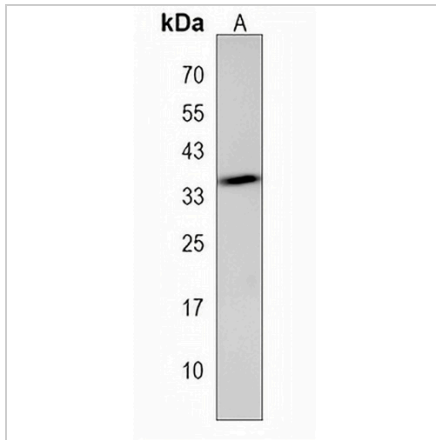
Description	Rabbit polyclonal antibody to SPATC1L
Specificity	Recognizes endogenous levels of SPATC1L protein.
Antibody Type	Primary antibody
Immunogen	KLH-conjugated synthetic peptide encompassing a sequence within the C-terminal region of human SPATC1L. The exact sequence is proprietary.
Purification	The antibody was purified by immunogen affinity chromatography.
Molecular Weight	Predicted: 37 kD; Observed: 35 kD
Form/Buffer	Liquid in 0.42% Potassium phosphate, 0.87% Sodium chloride, pH 7.3, 30% glycerol, and 0.01% sodium azide.
Alternative Names	C21orf56; Speriolin-like protein; Spermatogenesis and centriole-associated protein 1-like protein
Gene Symbol	SPATC1L
Entrez Gene	84221(Human)
SwissProt	Q9H0A9(Human)

*AREX continuously optimizes our products. Webpage content may not reflect the latest updates. For inquiries, please contact info@arexbio.com or your local distributor.

*Clone Number, Reactivity, Source/Host and Clonality can be found in the product name and Key Features section above.

DATASHEET**SPATC1L Rabbit Polyclonal Antibody**

CAT. NO. APA19434

DATA

Western blot analysis of SPATC1L expression in mouse liver (A) whole cell lysates.
(Predicted band size: 37 kD; Observed band size: 35 kD)

STORAGE

Store at 4°C short term. For long term storage, store at -20°C, avoiding freeze/thaw cycles.

NOTE

For Research Use Only. Not for diagnostic, therapeutics, prophylactic or in vivo use.