

DATASHEET

CXorf56 Rabbit Polyclonal Antibody

CAT. NO. APA19435

KEY FEATURES

Target	CXorf56	Source / Host	Rabbit
Reactivity	Human	Clonality	Polyclonal
Applications	WB, FC	Conjugation	Unconjugated
Form / Buffer	Liquid in 0.42% Potassium phosphate, 0.87% Sodium chloride, pH 7.3, 30% glycerol, and 0.01% sodium azide.		Storage at-20°C

BACKGROUND

Molecular adapter that stimulates membrane curvature formation and subsequent endoplasmic reticulum exit site (ERES) establishment by recruiting PI3K complex I, leading to COPII vesicle-mediated transport establishment by recruiting PI3K complex I, leading to COPII vesicle-mediated transport . Promotes endoplasmic reticulum (ER) exit of cGAMP-activated STING1 oligomers .

APPLICATION

To ensure optimal assay performance, AREX recommends conducting reagent titration tailored to each testing system for optimal detection results.

WB	1:500 - 1:1000
FC	1:10 - 1:50

*Results are sample-specific. Please refer to your local assay conditions and test parameters for reference.

PRODUCT OVERVIEW

Description	Rabbit polyclonal antibody to CXorf56
Specificity	Recognizes endogenous levels of CXorf56 protein.
Antibody Type	Primary antibody
Immunogen	KLH-conjugated synthetic peptide encompassing a sequence within the N-terminal region of human CXorf56. The exact sequence is proprietary.
Purification	The antibody was purified by immunogen affinity chromatography.
Molecular Weight	Predicted: 25 kD; Observed: 29 kD
Form/Buffer	Liquid in 0.42% Potassium phosphate, 0.87% Sodium chloride, pH 7.3, 30% glycerol, and 0.01% sodium azide.
Alternative Names	UPF0428 protein CXorf56
Gene Symbol	CXorf56
Entrez Gene	63932(Human)
SwissProt	Q9H5V9(Human)

*AREX continuously optimizes our products. Webpage content may not reflect the latest updates. For inquiries, please contact info@arexbio.com or your local distributor.

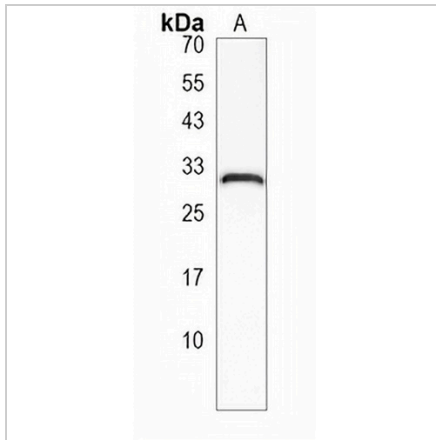
*Clone Number, Reactivity, Source/Host and Clonality can be found in the product name and Key Features section above.

DATASHEET

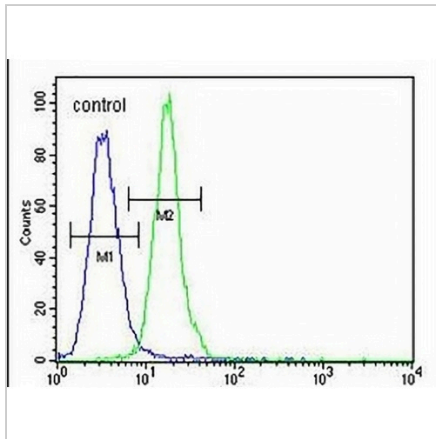
CXorf56 Rabbit Polyclonal Antibody

CAT. NO. APA19435

DATA



Western blot analysis of CXorf56 expression in mouse kidney (A) whole cell lysates. (Predicted band size: 25 kD; Observed band size: 29 kD)



Flow cytometric analysis of MDAMB435 cells using Anti-CXorf56 Antibody. The cells were fixed with 2% paraformaldehyde (10 min) and then permeabilized with 90% methanol for 10 min. The cells were incubated in 2% bovine serum albumin to block non-specific protein-protein interactions followed by the antibody at 37 °C for 60 min. The secondary antibody Goat Anti-Rabbit IgG (H&L) - AREX® Fluor 488 was incubated at 37 °C for 40 min. Isotype control antibody (blue line) was used under the same condition.

STORAGE

Store at 4°C short term. For long term storage, store at -20°C, avoiding freeze/thaw cycles.

NOTE

For Research Use Only. Not for diagnostic, therapeutics, prophylactic or in vivo use.