

**DATASHEET**

**SLC19A3 Rabbit Polyclonal Antibody**

CAT. NO. APA19453

**KEY FEATURES**

Target	SLC19A3	Source / Host	Rabbit
Reactivity	Human	Clonality	Polyclonal
Applications	WB	Conjugation	Unconjugated
Form / Buffer	Liquid in 0.42% Potassium phosphate, 0.87% Sodium chloride, pH 7.3, 30% glycerol, and 0.01% sodium azide.		Storage at -20°C

**BACKGROUND**

Mediates high affinity thiamine uptake, probably via a proton anti-transport mechanism. Has no folate transport activity. Mediates H(+)-dependent pyridoxine transport.

**APPLICATION**

To ensure optimal assay performance, AREX recommends conducting reagent titration tailored to each testing system for optimal detection results.

WB	1:500 - 1:1000
----	----------------

\*Results are sample-specific. Please refer to your local assay conditions and test parameters for reference.

**PRODUCT OVERVIEW**

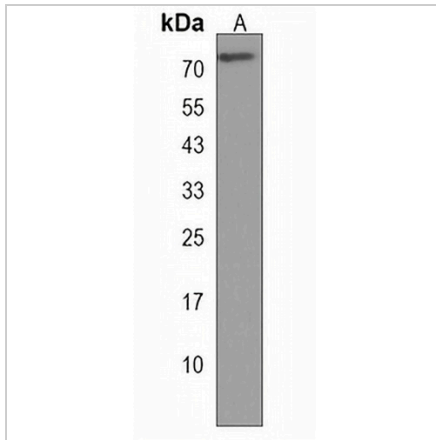
Description	Rabbit polyclonal antibody to SLC19A3
Specificity	Recognizes endogenous levels of SLC19A3 protein.
Antibody Type	Primary antibody
Immunogen	KLH-conjugated synthetic peptide encompassing a sequence within the Central region of human SLC19A3. The exact sequence is proprietary.
Purification	The antibody was purified by immunogen affinity chromatography.
Molecular Weight	Predicted: 55 kD; Observed: 72 kD
Form/Buffer	Liquid in 0.42% Potassium phosphate, 0.87% Sodium chloride, pH 7.3, 30% glycerol, and 0.01% sodium azide.
Alternative Names	Thiamine transporter 2; ThTr-2; ThTr2; Solute carrier family 19 member 3
Gene Symbol	SLC19A3
Entrez Gene	80704(Human)
SwissProt	Q9BZV2(Human)

\*AREX continuously optimizes our products. Webpage content may not reflect the latest updates. For inquiries, please contact [info@arexbio.com](mailto:info@arexbio.com) or your local distributor.

\*Clone Number, Reactivity, Source/Host and Clonality can be found in the product name and Key Features section above.

**DATASHEET****SLC19A3 Rabbit Polyclonal Antibody**

CAT. NO. APA19453

**DATA**

Western blot analysis of SLC19A3 expression in NCIH292 (A) whole cell lysates. (Predicted band size: 55 kD; Observed band size: 72 kD)

**STORAGE**

Store at 4°C short term. For long term storage, store at -20°C, avoiding freeze/thaw cycles.

**NOTE**

For Research Use Only. Not for diagnostic, therapeutics, prophylactic or in vivo use.