

DATASHEET

CRLS1 Rabbit Polyclonal Antibody

CAT. NO. APA19463

KEY FEATURES

Target	CRLS1	Source / Host	Rabbit
Reactivity	Human	Clonality	Polyclonal
Applications	WB, IHC	Conjugation	Unconjugated
Form / Buffer	Liquid in 0.42% Potassium phosphate, 0.87% Sodium chloride, pH 7.3, 30% glycerol, and 0.01% sodium azide.		Storage at -20°C

BACKGROUND

Catalyzes the synthesis of cardiolipin (CL) (diphosphatidylglycerol) by specifically transferring a phosphatidyl group from CDP-diacylglycerol to phosphatidylglycerol (PG) (diphosphatidylglycerol) by specifically transferring a phosphatidyl group from CDP-diacylglycerol to phosphatidylglycerol (PG). CL is a key phospholipid in mitochondrial membranes and plays important roles in maintaining the functional integrity and dynamics of mitochondria under both optimal and stress conditions.

APPLICATION

To ensure optimal assay performance, AREX recommends conducting reagent titration tailored to each testing system for optimal detection results.

WB	1:500 - 1:1000
IHC	1:50 - 1:200

*Results are sample-specific. Please refer to your local assay conditions and test parameters for reference.

PRODUCT OVERVIEW

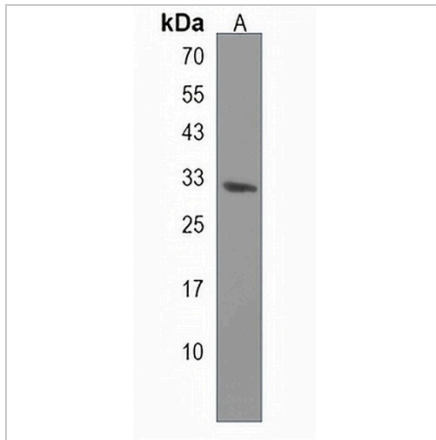
Description	Rabbit polyclonal antibody to CRLS1
Specificity	Recognizes endogenous levels of CRLS1 protein.
Antibody Type	Primary antibody
Immunogen	KLH-conjugated synthetic peptide encompassing a sequence within the C-terminal region of human CRLS1. The exact sequence is proprietary.
Purification	The antibody was purified by immunogen affinity chromatography.
Molecular Weight	Predicted: 32 kD; Observed: 33 kD
Form/Buffer	Liquid in 0.42% Potassium phosphate, 0.87% Sodium chloride, pH 7.3, 30% glycerol, and 0.01% sodium azide.
Alternative Names	C20orf155; CLS1; Cardiolipin synthase; CLS; Protein GCD10 homolog
Gene Symbol	CRLS1
Entrez Gene	54675(Human)
SwissProt	Q9UJA2(Human)

*AREX continuously optimizes our products. Webpage content may not reflect the latest updates. For inquiries, please contact info@arexbio.com or your local distributor.

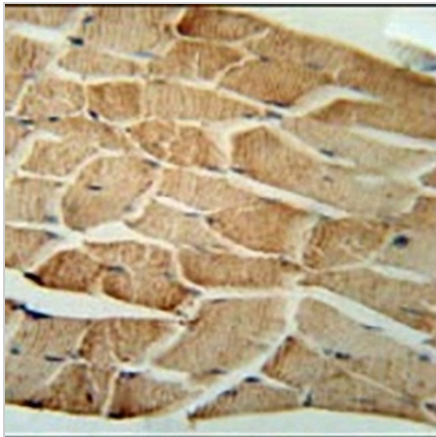
*Clone Number, Reactivity, Source/Host and Clonality can be found in the product name and Key Features section above.

DATASHEET**CRLS1 Rabbit Polyclonal Antibody**

CAT. NO. APA19463

DATA

Western blot analysis of CRLS1 expression in T47D (A) whole cell lysates. (Predicted band size: 32 kD; Observed band size: 33 kD)



Immunohistochemical analysis of CRLS1 staining in human skeletal muscle formalin fixed paraffin embedded tissue section. The section was pre-treated using heat mediated antigen retrieval with sodium citrate buffer (pH 6.0). The section was then incubated with the antibody at room temperature and detected using an HRP conjugated compact polymer system. DAB was used as the chromogen. The section was then counterstained with haematoxylin and mounted with DPX.

STORAGE

Store at 4°C short term. For long term storage, store at -20°C, avoiding freeze/thaw cycles.

NOTE

For Research Use Only. Not for diagnostic, therapeutics, prophylactic or in vivo use.