

DATASHEET

CCZ1 Rabbit Polyclonal Antibody

CAT. NO. APA19466

KEY FEATURES

| | | | |
|---------------|---|---------------|---------------------|
| Target | CCZ1 | Source / Host | Rabbit |
| Reactivity | Human, Mouse | Clonality | Polyclonal |
| Applications | WB, IHC | Conjugation | Unconjugated |
| Form / Buffer | Liquid in 0.42% Potassium phosphate, 0.87% Sodium chloride, pH 7.3, 30% glycerol, and 0.01% sodium azide. | | Storage at -20°C |

BACKGROUND

Acts in concert with MON1A, as a guanine exchange factor (GEF) for RAB7, promotes the exchange of GDP to GTP, converting it from an inactive GDP-bound form into an active GTP-bound form for RAB7, promotes the exchange of GDP to GTP, converting it from an inactive GDP-bound form into an active GTP-bound form .

APPLICATION

To ensure optimal assay performance, AREX recommends conducting reagent titration tailored to each testing system for optimal detection results.

| | |
|-----|----------------|
| WB | 1:500 - 1:1000 |
| IHC | 1:50 - 1:200 |

*Results are sample-specific. Please refer to your local assay conditions and test parameters for reference.

PRODUCT OVERVIEW

| | |
|-------------------|--|
| Description | Rabbit polyclonal antibody to CCZ1 |
| Specificity | Recognizes endogenous levels of CCZ1 protein. |
| Antibody Type | Primary antibody |
| Immunogen | KLH-conjugated synthetic peptide encompassing a sequence within the Central region of human CCZ1. The exact sequence is proprietary. |
| Purification | The antibody was purified by immunogen affinity chromatography. |
| Molecular Weight | Predicted: 55 kD; Observed: 71 kD |
| Form/Buffer | Liquid in 0.42% Potassium phosphate, 0.87% Sodium chloride, pH 7.3, 30% glycerol, and 0.01% sodium azide. |
| Alternative Names | C7orf28A; Vacuolar fusion protein CCZ1 homolog |
| Gene Symbol | CCZ1 |
| Entrez Gene | 221960; 51622(Human); 231874(Mouse) |
| SwissProt | P86791(Human); Q8C1Y8(Mouse) |

*AREX continuously optimizes our products. Webpage content may not reflect the latest updates. For inquiries, please contact info@arexbio.com or your local distributor.

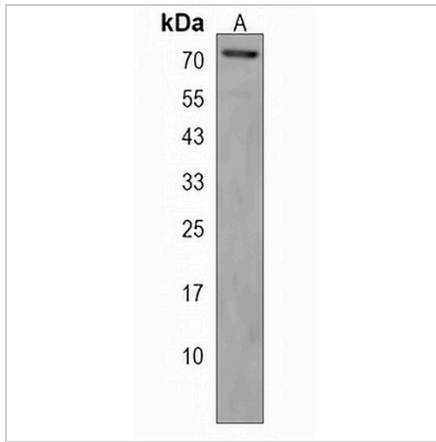
*Clone Number, Reactivity, Source/Host and Clonality can be found in the product name and Key Features section above.

DATASHEET

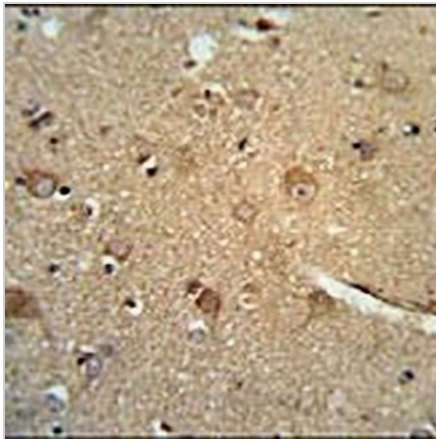
CCZ1 Rabbit Polyclonal Antibody

CAT. NO. APA19466

DATA



Western blot analysis of CCZ1 expression in MCF7 (A) whole cell lysates. (Predicted band size: 55 kD; Observed band size: 71 kD)



Immunohistochemical analysis of CCZ1 staining in human brain formalin fixed paraffin embedded tissue section. The section was pre-treated using heat mediated antigen retrieval with sodium citrate buffer (pH 6.0). The section was then incubated with the antibody at room temperature and detected using an HRP conjugated compact polymer system. DAB was used as the chromogen. The section was then counterstained with haematoxylin and mounted with DPX.

STORAGE

Store at 4°C short term. For long term storage, store at -20°C, avoiding freeze/thaw cycles.

NOTE

For Research Use Only. Not for diagnostic, therapeutics, prophylactic or in vivo use.