

DATASHEET

USP17L24 Rabbit Polyclonal Antibody

CAT. NO. APA19472

KEY FEATURES

Target	USP17L24	Source / Host	Rabbit
Reactivity	Human	Clonality	Polyclonal
Applications	WB, FC	Conjugation	Unconjugated
Form / Buffer	Liquid in 0.42% Potassium phosphate, 0.87% Sodium chloride, pH 7.3, 30% glycerol, and 0.01% sodium azide.		Storage at-20°C

BACKGROUND

Deubiquitinating enzyme that removes conjugated ubiquitin from specific proteins to regulate different cellular processes that may include cell proliferation, progression through the cell cycle, apoptosis, cell migration, and the cellular response to viral infection.

APPLICATION

To ensure optimal assay performance, AREX recommends conducting reagent titration tailored to each testing system for optimal detection results.

WB	1:500 - 1:1000
FC	1:10 - 1:50

*Results are sample-specific. Please refer to your local assay conditions and test parameters for reference.

PRODUCT OVERVIEW

Description	Rabbit polyclonal antibody to USP17L24
Specificity	Recognizes endogenous levels of USP17L24 protein.
Antibody Type	Primary antibody
Immunogen	KLH-conjugated synthetic peptide encompassing a sequence within the C-terminal region of human USP17L24. The exact sequence is proprietary.
Purification	The antibody was purified by immunogen affinity chromatography.
Molecular Weight	Predicted: 59 kD; Observed: 60 kD
Form/Buffer	Liquid in 0.42% Potassium phosphate, 0.87% Sodium chloride, pH 7.3, 30% glycerol, and 0.01% sodium azide.
Alternative Names	USP17; USP17H; USP17I; USP17J; USP17K; USP17L; USP17M; Ubiquitin carboxyl-terminal hydrolase 17-like protein 24; Deubiquitinating enzyme 17; Ubiquitin thioesterase 17; Ubiquitin-specific-processing protease 17
Gene Symbol	USP17L24; USP17L25; USP17L26; USP17L27; USP17L28; USP17L29; USP17L30
Entrez Gene	728369; 728373; 728379; 728393; 728400; 728405; 728419(Human)
SwissProt	Q0WX57(Human)

*AREX continuously optimizes our products. Webpage content may not reflect the latest updates. For inquiries, please contact info@arexbio.com or your local distributor.

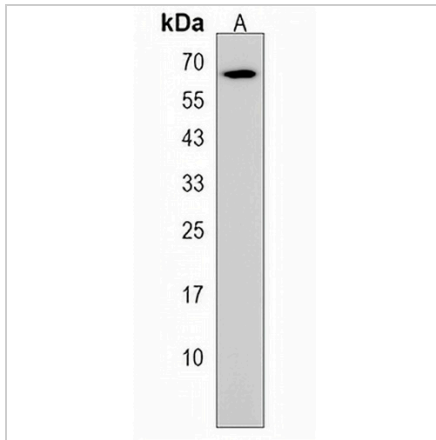
*Clone Number, Reactivity, Source/Host and Clonality can be found in the product name and Key Features section above.

DATASHEET

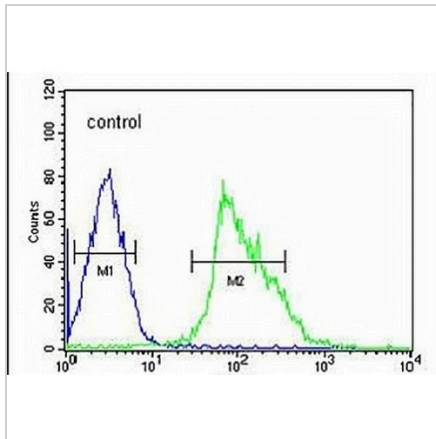
USP17L24 Rabbit Polyclonal Antibody

CAT. NO. APA19472

DATA



Western blot analysis of USP17L24 expression in MADMB231 (A) whole cell lysates. (Predicted band size: 59 kD; Observed band size: 60 kD)



Flow cytometric analysis of HepG2 cells using Anti-USP17L24 Antibody. The cells were fixed with 2% paraformaldehyde (10 min) and then permeabilized with 90% methanol for 10 min. The cells were incubated in 2% bovine serum albumin to block non-specific protein-protein interactions followed by the antibody at 37 °C for 60 min. The secondary antibody Goat Anti-Rabbit IgG (H&L) - AREX® Fluor 488 was incubated at 37 °C for 40 min. Isotype control antibody (blue line) was used under the same condition.

STORAGE

Store at 4°C short term. For long term storage, store at -20°C, avoiding freeze/thaw cycles.

NOTE

For Research Use Only. Not for diagnostic, therapeutics, prophylactic or in vivo use.