

**DATASHEET**

**hbae1 Rabbit Polyclonal Antibody**

CAT. NO. APA19486

**KEY FEATURES**

Target	hbae1	Source / Host	Rabbit
Reactivity	Zebrafish	Clonality	Polyclonal
Applications	WB	Conjugation	Unconjugated
Form / Buffer	Liquid in 0.42% Potassium phosphate, 0.87% Sodium chloride, pH 7.3, 30% glycerol, and 0.01% sodium azide.		Storage at -20°C

**BACKGROUND**

(hbae1.1, zebrafish) Predicted to enable heme binding activity; iron ion binding activity; and oxygen binding activity. Predicted to act upstream of or within oxygen transport. Predicted to be part of hemoglobin complex. Is expressed in several structures, including cardiovascular system; hematopoietic cell; hematopoietic system; mesoderm; and renal system. Human ortholog(s) of this gene implicated in Heinz body anemia; alpha thalassemia; familial erythrocytosis 7; and hemoglobin H disease. Orthologous to human HBA1 (hemoglobin subunit alpha 1) and HBZ (hemoglobin subunit zeta).

**APPLICATION**

To ensure optimal assay performance, AREX recommends conducting reagent titration tailored to each testing system for optimal detection results.

WB	1:500 - 1:1000
----	----------------

\*Results are sample-specific. Please refer to your local assay conditions and test parameters for reference.

**PRODUCT OVERVIEW**

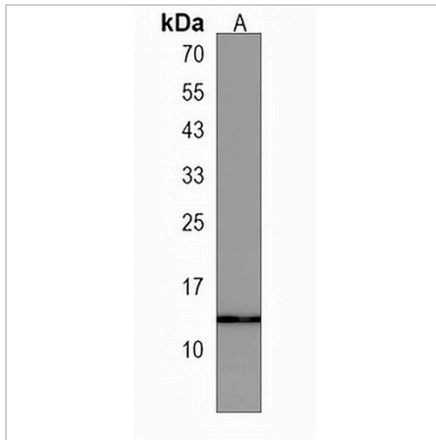
Description	Rabbit polyclonal antibody to hbae1
Specificity	Recognizes endogenous levels of hbae1 protein.
Antibody Type	Primary antibody
Immunogen	KLH-conjugated synthetic peptide encompassing a sequence within the Central region of zebrafish hbae1. The exact sequence is proprietary.
Purification	The antibody was purified by immunogen affinity chromatography.
Molecular Weight	Predicted: 15 kD; Observed: 14 kD
Form/Buffer	Liquid in 0.42% Potassium phosphate, 0.87% Sodium chloride, pH 7.3, 30% glycerol, and 0.01% sodium azide.
Gene Symbol	HBAE1
Entrez Gene	30597(Human)
SwissProt	Q7ZT21(Human)

\*AREX continuously optimizes our products. Webpage content may not reflect the latest updates. For inquiries, please contact [info@arexbio.com](mailto:info@arexbio.com) or your local distributor.

\*Clone Number, Reactivity, Source/Host and Clonality can be found in the product name and Key Features section above.

**DATASHEET****hbae1 Rabbit Polyclonal Antibody**

CAT. NO. APA19486

**DATA**

Western blot analysis of hbae1 expression in Zebrafish (A) whole cell lysates. (Predicted band size: 15 kD; Observed band size: 14 kD)

**STORAGE**

Store at 4°C short term. For long term storage, store at -20°C, avoiding freeze/thaw cycles.

**NOTE**

For Research Use Only. Not for diagnostic, therapeutics, prophylactic or in vivo use.