

DATASHEET

cisd2 Rabbit Polyclonal Antibody

CAT. NO. APA19491

KEY FEATURES

Target	cisd2	Source / Host	Rabbit
Reactivity	Zebrafish	Clonality	Polyclonal
Applications	WB	Conjugation	Unconjugated
Form / Buffer	Liquid in 0.42% Potassium phosphate, 0.87% Sodium chloride, pH 7.3, 30% glycerol, and 0.01% sodium azide.		Storage at-20°C

BACKGROUND

Regulator of autophagy that contributes to antagonize becn1-mediated cellular autophagy at the endoplasmic reticulum. Participates in the interaction of bcl2 with becn1 and is required for bcl2-mediated depression of endoplasmic reticulum Ca(2+) stores during autophagy .

APPLICATION

To ensure optimal assay performance, AREX recommends conducting reagent titration tailored to each testing system for optimal detection results.

WB	1:500 - 1:1000
----	----------------

*Results are sample-specific. Please refer to your local assay conditions and test parameters for reference.

PRODUCT OVERVIEW

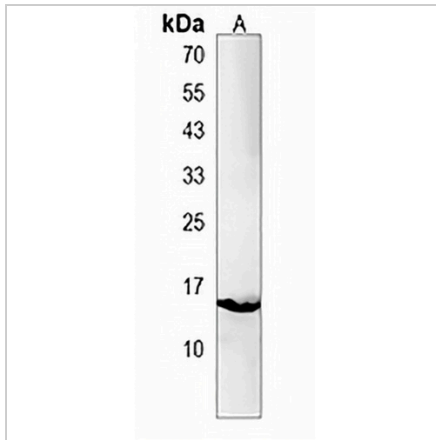
Description	Rabbit polyclonal antibody to cisd2
Specificity	Recognizes endogenous levels of cisd2 protein.
Antibody Type	Primary antibody
Immunogen	KLH-conjugated synthetic peptide encompassing a sequence within the C-terminal region of zebrafish cisd2. The exact sequence is proprietary.
Purification	The antibody was purified by immunogen affinity chromatography.
Molecular Weight	Predicted: 15 kD; Observed: 15 kD
Form/Buffer	Liquid in 0.42% Potassium phosphate, 0.87% Sodium chloride, pH 7.3, 30% glycerol, and 0.01% sodium azide.
Gene Symbol	CISD2
Entrez Gene	64148(Human)
SwissProt	Q7T326(Human)

*AREX continuously optimizes our products. Webpage content may not reflect the latest updates. For inquiries, please contact info@arexbio.com or your local distributor.

*Clone Number, Reactivity, Source/Host and Clonality can be found in the product name and Key Features section above.

DATASHEET**cisd2 Rabbit Polyclonal Antibody**

CAT. NO. APA19491

DATA

Western blot analysis of cisd2 expression in mouse brain (A) whole cell lysates. (Predicted band size: 15 kD; Observed band size: 15 kD)

STORAGE

Store at 4°C short term. For long term storage, store at -20°C, avoiding freeze/thaw cycles.

NOTE

For Research Use Only. Not for diagnostic, therapeutics, prophylactic or in vivo use.