

DATASHEET

adra2a Rabbit Polyclonal Antibody

CAT. NO. APA19495

KEY FEATURES

Target	adra2a	Source / Host	Rabbit
Reactivity	Zebrafish	Clonality	Polyclonal
Applications	WB	Conjugation	Unconjugated
Form / Buffer	Liquid in 0.42% Potassium phosphate, 0.87% Sodium chloride, pH 7.3, 30% glycerol, and 0.01% sodium azide.		Storage at -20°C

BACKGROUND

Alpha-2 adrenergic receptors are G protein-coupled receptors for catecholamines that activate the G(i/o) protein pathway, thereby promoting adenylyl cyclase inhibition, ERK1/2 stimulation, and voltage-gated calcium channels suppression protein pathway, thereby promoting adenylyl cyclase inhibition, ERK1/2 stimulation, and voltage-gated calcium channels suppression . ADRA2A and ADRA2C mediates the presynaptic feedback inhibition of neurotransmitter release from noradrenergic nerve terminals in sympathetic and central nervous systems. ADRA2A inhibits transmitter release at high stimulation frequencies, whereas ADRA2C modulates neurotransmission at lower levels of nerve activity . The order of potency for this receptor is dexmedetomidine > oxymetazoline = epinephrine > norepinephrine .

APPLICATION

To ensure optimal assay performance, AREX recommends conducting reagent titration tailored to each testing system for optimal detection results.

WB	1:500 - 1:1000
----	----------------

*Results are sample-specific. Please refer to your local assay conditions and test parameters for reference.

PRODUCT OVERVIEW

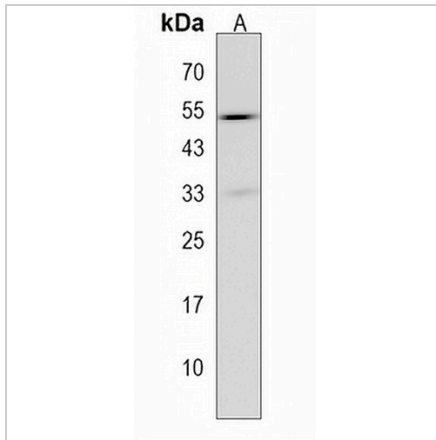
Description	Rabbit polyclonal antibody to adra2a
Specificity	Recognizes endogenous levels of adra2a protein.
Antibody Type	Primary antibody
Immunogen	KLH-conjugated synthetic peptide encompassing a sequence within the Central region of zebrafish adra2a. The exact sequence is proprietary.
Purification	The antibody was purified by immunogen affinity chromatography.
Molecular Weight	Predicted: 43 kD; Observed: 50 kD
Form/Buffer	Liquid in 0.42% Potassium phosphate, 0.87% Sodium chloride, pH 7.3, 30% glycerol, and 0.01% sodium azide.
Gene Symbol	ADRA2A
Entrez Gene	266750(Human)
SwissProt	Q90WY4(Human)

*AREX continuously optimizes our products. Webpage content may not reflect the latest updates. For inquiries, please contact info@arexbio.com or your local distributor.

*Clone Number, Reactivity, Source/Host and Clonality can be found in the product name and Key Features section above.

DATASHEET**adra2a Rabbit Polyclonal Antibody**

CAT. NO. APA19495

DATA

Western blot analysis of adra2a expression in zebrafish muscle (A) whole cell lysates.
(Predicted band size: 43 kD; Observed band size: 50 kD)

STORAGE

Store at 4°C short term. For long term storage, store at -20°C, avoiding freeze/thaw cycles.

NOTE

For Research Use Only. Not for diagnostic, therapeutics, prophylactic or in vivo use.