

## DATASHEET

# s1pr2 Rabbit Polyclonal Antibody

CAT. NO. APA19506

### KEY FEATURES

Target	s1pr2	Source / Host	Rabbit
Reactivity	Zebrafish	Clonality	Polyclonal
Applications	WB	Conjugation	Unconjugated
Form / Buffer	Liquid in 0.42% Potassium phosphate, 0.87% Sodium chloride, pH 7.3, 30% glycerol, and 0.01% sodium azide.		Storage at-20°C

### BACKGROUND

Receptor for the lysosphingolipid sphingosine 1-phosphate (S1P) . S1P receptor is critical for cell migration and epithelial integrity during vertebrate embryogenesis . Receptor for the chemokine-like protein FAM19A5 . Mediates the inhibitory effect of FAM19A5 on vascular smooth muscle cell proliferation and migration .

### APPLICATION

To ensure optimal assay performance, AREX recommends conducting reagent titration tailored to each testing system for optimal detection results.

WB	1:500 - 1:1000
----	----------------

\*Results are sample-specific. Please refer to your local assay conditions and test parameters for reference.

### PRODUCT OVERVIEW

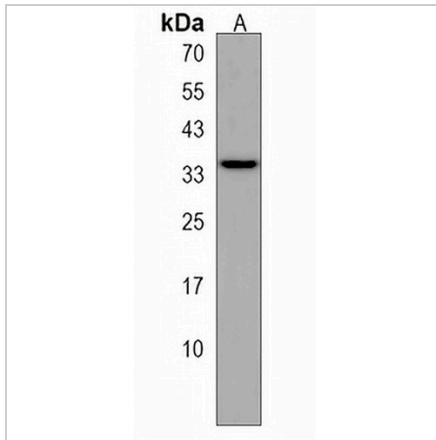
Description	Rabbit polyclonal antibody to s1pr2
Specificity	Recognizes endogenous levels of s1pr2 protein.
Antibody Type	Primary antibody
Immunogen	KLH-conjugated synthetic peptide encompassing a sequence within the N-terminal region of zebrafish s1pr2. The exact sequence is proprietary.
Purification	The antibody was purified by immunogen affinity chromatography.
Molecular Weight	Predicted: 41 kD; Observed: 36 kD
Form/Buffer	Liquid in 0.42% Potassium phosphate, 0.87% Sodium chloride, pH 7.3, 30% glycerol, and 0.01% sodium azide.
Gene Symbol	S1PR2
Entrez Gene	170457(Human)
SwissProt	Q9I8K8(Human)

\*AREX continuously optimizes our products. Webpage content may not reflect the latest updates. For inquiries, please contact [info@arexbio.com](mailto:info@arexbio.com) or your local distributor.

\*Clone Number, Reactivity, Source/Host and Clonality can be found in the product name and Key Features section above.

**DATASHEET****s1pr2 Rabbit Polyclonal Antibody**

CAT. NO. APA19506

**DATA**

Western blot analysis of s1pr2 expression in zebrafish muscle (A) whole cell lysates.  
(Predicted band size: 41 kD; Observed band size: 36 kD)

**STORAGE**

Store at 4°C short term. For long term storage, store at -20°C, avoiding freeze/thaw cycles.

**NOTE**

For Research Use Only. Not for diagnostic, therapeutics, prophylactic or in vivo use.