

DATASHEET

wnt8a Rabbit Polyclonal Antibody

CAT. NO. APA19516

KEY FEATURES

Target	wnt8a	Source / Host	Rabbit
Reactivity	Zebrafish	Clonality	Polyclonal
Applications	WB	Conjugation	Unconjugated
Form / Buffer	Liquid in 0.42% Potassium phosphate, 0.87% Sodium chloride, pH 7.3, 30% glycerol, and 0.01% sodium azide.		Storage at -20°C

BACKGROUND

Ligand for members of the frizzled family of seven transmembrane receptors (Probable). Required for mesoderm and neural ectoderm patterning during gastrulation . Required for mesoderm and neural ectoderm patterning during gastrulation . Involved in axis formation during embryonic development, via activation of canonical Wnt/CTNNB1 signaling . May be involved in the specification of the spatial patterns of expression of Gsc and other regulatory genes leading to the establishment of the embryonic axis .

APPLICATION

To ensure optimal assay performance, AREX recommends conducting reagent titration tailored to each testing system for optimal detection results.

WB	1:500 - 1:1000
----	----------------

*Results are sample-specific. Please refer to your local assay conditions and test parameters for reference.

PRODUCT OVERVIEW

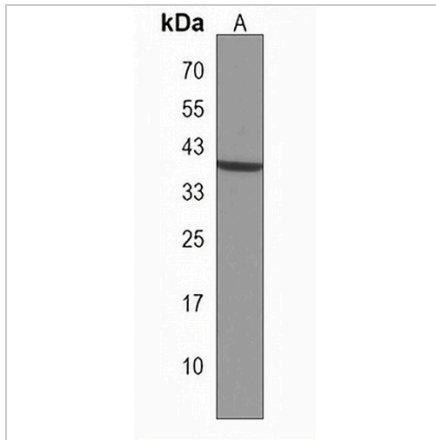
Description	Rabbit polyclonal antibody to wnt8a
Specificity	Recognizes endogenous levels of wnt8a protein.
Antibody Type	Primary antibody
Immunogen	KLH-conjugated synthetic peptide encompassing a sequence within the Central region of zebrafish wnt8a. The exact sequence is proprietary.
Purification	The antibody was purified by immunogen affinity chromatography.
Molecular Weight	Predicted: 40 kD; Observed: 40 kD
Form/Buffer	Liquid in 0.42% Potassium phosphate, 0.87% Sodium chloride, pH 7.3, 30% glycerol, and 0.01% sodium azide.
Gene Symbol	WNT8A
Entrez Gene	30122(Human)
SwissProt	P51028(Human)

*AREX continuously optimizes our products. Webpage content may not reflect the latest updates. For inquiries, please contact info@arexbio.com or your local distributor.

*Clone Number, Reactivity, Source/Host and Clonality can be found in the product name and Key Features section above.

DATASHEET**wnt8a Rabbit Polyclonal Antibody**

CAT. NO. APA19516

DATA

Western blot analysis of wnt8a expression in Zebrafish muscle (A) whole cell lysates.
(Predicted band size: 40 kD; Observed band size: 40 kD)

STORAGE

Store at 4°C short term. For long term storage, store at -20°C, avoiding freeze/thaw cycles.

NOTE

For Research Use Only. Not for diagnostic, therapeutics, prophylactic or in vivo use.