

**DATASHEET**

**FABP1 Rabbit Polyclonal Antibody**

CAT. NO. APA19518

**KEY FEATURES**

Target	FABP1	Source / Host	Rabbit
Reactivity	Human, Mouse, Rat	Clonality	Polyclonal
Applications	WB, IF/ICC	Conjugation	Unconjugated
Form / Buffer	Liquid in 0.42% Potassium phosphate, 0.87% Sodium chloride, pH 7.3, 30% glycerol, and 0.01% sodium azide.		Storage at -20°C

**BACKGROUND**

Plays a role in lipoprotein-mediated cholesterol uptake in hepatocytes . Binds cholesterol . Binds free fatty acids and their coenzyme A derivatives, bilirubin, and some other small molecules in the cytoplasm. May be involved in intracellular lipid transport .

**APPLICATION**

To ensure optimal assay performance, AREX recommends conducting reagent titration tailored to each testing system for optimal detection results.

WB	1:500 - 1:1000
IF/ICC	1:50 - 1:200

\*Results are sample-specific. Please refer to your local assay conditions and test parameters for reference.

**PRODUCT OVERVIEW**

Description	Rabbit polyclonal antibody to FABP1
Specificity	Recognizes endogenous levels of FABP1 protein.
Antibody Type	Primary antibody
Immunogen	Recombinant fusion protein of human FABP1. The exact sequence is proprietary.
Purification	The antibody was purified by immunogen affinity chromatography.
Molecular Weight	Predicted: 14 kD; Observed: 14 kD
Form/Buffer	Liquid in 0.42% Potassium phosphate, 0.87% Sodium chloride, pH 7.3, 30% glycerol, and 0.01% sodium azide.
Alternative Names	FABPL; Fatty acid-binding protein, liver; Fatty acid-binding protein 1; Liver-type fatty acid-binding protein; L-FABP
Gene Symbol	FABP1
Entrez Gene	2168(Human); 14080(Mouse); 24360(Rat)
SwissProt	P07148(Human); P12710(Mouse); P02692(Rat)

\*AREX continuously optimizes our products. Webpage content may not reflect the latest updates. For inquiries, please contact [info@arexbio.com](mailto:info@arexbio.com) or your local distributor.

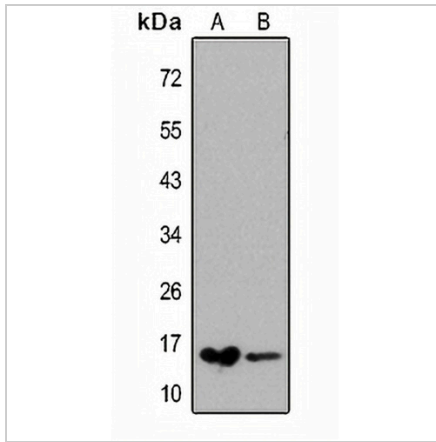
\*Clone Number, Reactivity, Source/Host and Clonality can be found in the product name and Key Features section above.

**DATASHEET**

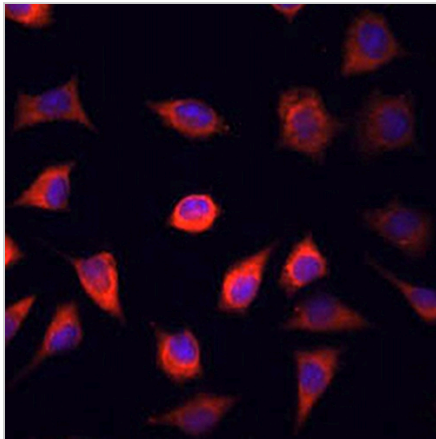
**FABP1 Rabbit Polyclonal Antibody**

CAT. NO. APA19518

**DATA**



Western blot analysis of FABP1 expression in mouse liver (A), rat liver (B) whole cell lysates. (Predicted band size: 14 kD; Observed band size: 14 kD)



Immunofluorescent analysis of FABP1 staining in L929 cells. Formalin-fixed cells were permeabilized with 0.1% Triton X-100 in TBS for 5-10 minutes and blocked with 3% BSA-PBS for 30 minutes at room temperature. Cells were probed with the primary antibody in 3% BSA-PBS and incubated overnight at 4 °C in a humidified chamber. Cells were washed with PBST and incubated with a AREX® Fluor 594-conjugated secondary antibody (red) in PBS at room temperature in the dark. DAPI was used to stain the cell nuclei (blue).

**STORAGE**

Store at 4°C short term. For long term storage, store at -20°C, avoiding freeze/thaw cycles.

**NOTE**

For Research Use Only. Not for diagnostic, therapeutics, prophylactic or in vivo use.