

DATASHEET

TMX2 Rabbit Polyclonal Antibody

CAT. NO. APA19521

KEY FEATURES

Target	TMX2	Source / Host	Rabbit
Reactivity	Human, Mouse, Rat	Clonality	Polyclonal
Applications	WB, IF/ICC	Conjugation	Unconjugated
Form / Buffer	Liquid in 0.42% Potassium phosphate, 0.87% Sodium chloride, pH 7.3, 30% glycerol, and 0.01% sodium azide.		Storage at-20°C

BACKGROUND

Endoplasmic reticulum and mitochondria-associated protein that probably functions as a regulator of cellular redox state and thereby regulates protein post-translational modification, protein folding and mitochondrial activity. Indirectly regulates neuronal proliferation, migration, and organization in the developing brain.

APPLICATION

To ensure optimal assay performance, AREX recommends conducting reagent titration tailored to each testing system for optimal detection results.

WB	1:500 - 1:1000
IF/ICC	1:50 - 1:200

*Results are sample-specific. Please refer to your local assay conditions and test parameters for reference.

PRODUCT OVERVIEW

Description	Rabbit polyclonal antibody to TMX2
Specificity	Recognizes endogenous levels of TMX2 protein.
Antibody Type	Primary antibody
Immunogen	Recombinant fusion protein of human TMX2. The exact sequence is proprietary.
Purification	The antibody was purified by immunogen affinity chromatography.
Molecular Weight	Predicted: 34 kD; Observed: 100 kD
Form/Buffer	Liquid in 0.42% Potassium phosphate, 0.87% Sodium chloride, pH 7.3, 30% glycerol, and 0.01% sodium azide.
Alternative Names	TXNDC14; CGI-31; My009; PIG26; PSEC0045; UNQ237/PRO270; Thioredoxin-related transmembrane protein 2; Cell proliferation-inducing gene 26 protein; Thioredoxin domain-containing protein 14
Gene Symbol	TMX2
Entrez Gene	51075(Human); 66958(Mouse); 295701(Rat)
SwissProt	Q9Y320(Human); Q9D710(Mouse); Q5XIK2(Rat)

*AREX continuously optimizes our products. Webpage content may not reflect the latest updates. For inquiries, please contact info@arexbio.com or your local distributor.

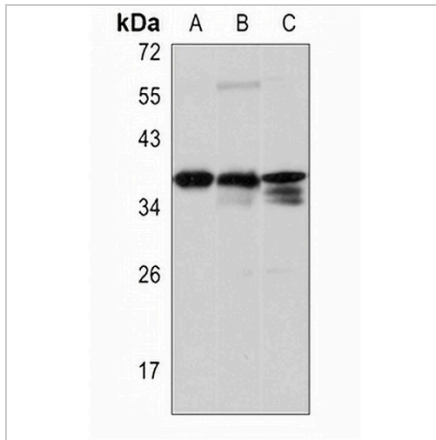
*Clone Number, Reactivity, Source/Host and Clonality can be found in the product name and Key Features section above.

DATASHEET

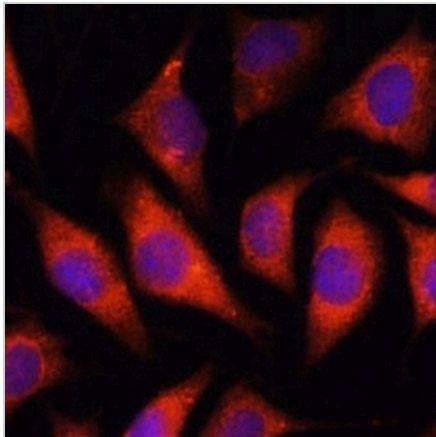
TMX2 Rabbit Polyclonal Antibody

CAT. NO. APA19521

DATA



Western blot analysis of TMX2 expression in HeLa (A), mouse liver (B), rat testis (C) whole cell lysates. (Predicted band size: 34 kD; Observed band size: 100 kD)



Immunofluorescent analysis of TMX2 staining in L929 cells. Formalin-fixed cells were permeabilized with 0.1% Triton X-100 in TBS for 5-10 minutes and blocked with 3% BSA-PBS for 30 minutes at room temperature. Cells were probed with the primary antibody in 3% BSA-PBS and incubated overnight at 4 °C in a humidified chamber. Cells were washed with PBST and incubated with a AREX® Fluor 594-conjugated secondary antibody (red) in PBS at room temperature in the dark. DAPI was used to stain the cell nuclei (blue).

STORAGE

Store at 4°C short term. For long term storage, store at -20°C, avoiding freeze/thaw cycles.

NOTE

For Research Use Only. Not for diagnostic, therapeutics, prophylactic or in vivo use.