

**DATASHEET**

**RNASEH2A Rabbit Polyclonal Antibody**

CAT. NO. APA19532

**KEY FEATURES**

Target	RNASEH2A	Source / Host	Rabbit
Reactivity	Human, Mouse, Rat	Clonality	Polyclonal
Applications	WB	Conjugation	Unconjugated
Form / Buffer	Liquid in 0.42% Potassium phosphate, 0.87% Sodium chloride, pH 7.3, 30% glycerol, and 0.01% sodium azide.		Storage at -20°C

**BACKGROUND**

Catalytic subunit of RNase HII, an endonuclease that specifically degrades the RNA of RNA:DNA hybrids. Participates in DNA replication, possibly by mediating the removal of lagging-strand Okazaki fragment RNA primers during DNA replication. Mediates the excision of single ribonucleotides from DNA:RNA duplexes.

**APPLICATION**

To ensure optimal assay performance, AREX recommends conducting reagent titration tailored to each testing system for optimal detection results.

WB	1:500 - 1:1000
----	----------------

\*Results are sample-specific. Please refer to your local assay conditions and test parameters for reference.

**PRODUCT OVERVIEW**

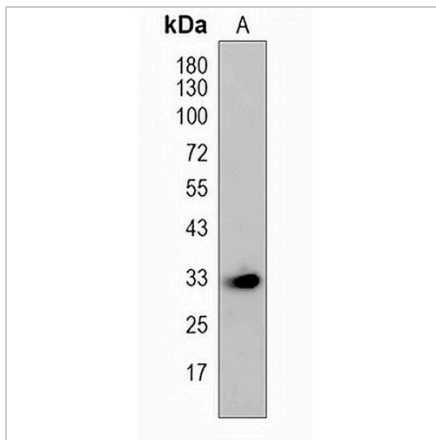
Description	Rabbit polyclonal antibody to RNASEH2A
Specificity	Recognizes endogenous levels of RNASEH2A protein.
Antibody Type	Primary antibody
Immunogen	KLH-conjugated synthetic peptide encompassing a sequence within the center region of human RNASEH2A. The exact sequence is proprietary.
Purification	The antibody was purified by immunogen affinity chromatography.
Molecular Weight	Predicted: 33 kD; Observed: 33 kD
Form/Buffer	Liquid in 0.42% Potassium phosphate, 0.87% Sodium chloride, pH 7.3, 30% glycerol, and 0.01% sodium azide.
Alternative Names	RNASEHI; RNHIA; Ribonuclease H2 subunit A; RNase H2 subunit A; Aicardi-Goutieres syndrome 4 protein; AGS4; RNase H(35); Ribonuclease HI large subunit; RNase HI large subunit; Ribonuclease HI subunit A
Gene Symbol	RNASEH2A
Entrez Gene	10535(Human); 69724(Mouse); 364974(Rat)
SwissProt	O75792(Human); Q9CWX8(Mouse); Q5U209(Rat)

\*AREX continuously optimizes our products. Webpage content may not reflect the latest updates. For inquiries, please contact [info@arexbio.com](mailto:info@arexbio.com) or your local distributor.

\*Clone Number, Reactivity, Source/Host and Clonality can be found in the product name and Key Features section above.

**DATASHEET****RNASEH2A Rabbit Polyclonal Antibody**

CAT. NO. APA19532

**DATA**

Western blot analysis of RNASEH2A expression in Jurkat (A) whole cell lysates. (Predicted band size: 33 kD; Observed band size: 33 kD)

**STORAGE**

Store at 4°C short term. For long term storage, store at -20°C, avoiding freeze/thaw cycles.

**NOTE**

For Research Use Only. Not for diagnostic, therapeutics, prophylactic or in vivo use.