

DATASHEET

ERFE Rabbit Polyclonal Antibody

CAT. NO. APA19535

KEY FEATURES

Target	ERFE	Source / Host	Rabbit
Reactivity	Human, Mouse	Clonality	Polyclonal
Applications	WB	Conjugation	Unconjugated
Form / Buffer	Liquid in 0.42% Potassium phosphate, 0.87% Sodium chloride, pH 7.3, 30% glycerol, and 0.01% sodium azide.		Storage at -20°C

BACKGROUND

Iron-regulatory hormone that acts as an erythroid regulator after hemorrhage: produced by erythroblasts following blood loss and mediates suppression of hepcidin (HAMP) expression in the liver, thereby promoting increased iron absorption and mobilization from stores expression in the liver, thereby promoting increased iron absorption and mobilization from stores . Promotes lipid uptake into adipocytes and hepatocytes via transcriptional up-regulation of genes involved in fatty acid uptake . Inhibits apoptosis and inflammatory response in cardiomyocytes via promotion of sphingosine-1-phosphate (S1P) and cAMP-dependent activation of AKT signaling .

APPLICATION

To ensure optimal assay performance, AREX recommends conducting reagent titration tailored to each testing system for optimal detection results.

WB	1:500 - 1:1000
----	----------------

*Results are sample-specific. Please refer to your local assay conditions and test parameters for reference.

PRODUCT OVERVIEW

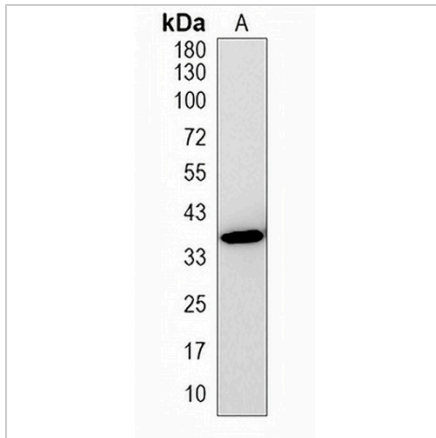
Description	Rabbit polyclonal antibody to ERFE
Specificity	Recognizes endogenous levels of ERFE protein.
Antibody Type	Primary antibody
Immunogen	KLH-conjugated synthetic peptide encompassing a sequence within the center region of human ERFE. The exact sequence is proprietary.
Purification	The antibody was purified by immunogen affinity chromatography.
Molecular Weight	Predicted: 37 kD; Observed: 37 kD
Form/Buffer	Liquid in 0.42% Potassium phosphate, 0.87% Sodium chloride, pH 7.3, 30% glycerol, and 0.01% sodium azide.
Alternative Names	C1QTNF15; CTRP15; FAM132B; Erythroferrone; Protein FAM132B; Complement C1q tumor necrosis factor-related protein 15; Myonectin
Gene Symbol	ERFE
Entrez Gene	151176(Human); 227358(Mouse)
SwissProt	Q4G0M1(Human); Q6PGN1(Mouse)

*AREX continuously optimizes our products. Webpage content may not reflect the latest updates. For inquiries, please contact info@arexbio.com or your local distributor.

*Clone Number, Reactivity, Source/Host and Clonality can be found in the product name and Key Features section above.

DATASHEET**ERFE Rabbit Polyclonal Antibody**

CAT. NO. APA19535

DATA

Western blot analysis of ERFE expression in VEC (A) whole cell lysates. (Predicted band size: 37 kD; Observed band size: 37 kD)

STORAGE

Store at 4°C short term. For long term storage, store at -20°C, avoiding freeze/thaw cycles.

NOTE

For Research Use Only. Not for diagnostic, therapeutics, prophylactic or in vivo use.