

DATASHEET

MT-ND6 Rabbit Polyclonal Antibody

CAT. NO. APA19541

KEY FEATURES

Target	MT-ND6	Source / Host	Rabbit
Reactivity	Human, Rat	Clonality	Polyclonal
Applications	WB	Conjugation	Unconjugated
Form / Buffer	Liquid in 0.42% Potassium phosphate, 0.87% Sodium chloride, pH 7.3, 30% glycerol, and 0.01% sodium azide.		Storage at -20°C

BACKGROUND

Core subunit of the mitochondrial membrane respiratory chain NADH dehydrogenase (Complex I) which catalyzes electron transfer from NADH through the respiratory chain, using ubiquinone as an electron acceptor which catalyzes electron transfer from NADH through the respiratory chain, using ubiquinone as an electron acceptor . Essential for the catalytic activity and assembly of complex I .

APPLICATION

To ensure optimal assay performance, AREX recommends conducting reagent titration tailored to each testing system for optimal detection results.

WB	1:500 - 1:1000
----	----------------

*Results are sample-specific. Please refer to your local assay conditions and test parameters for reference.

PRODUCT OVERVIEW

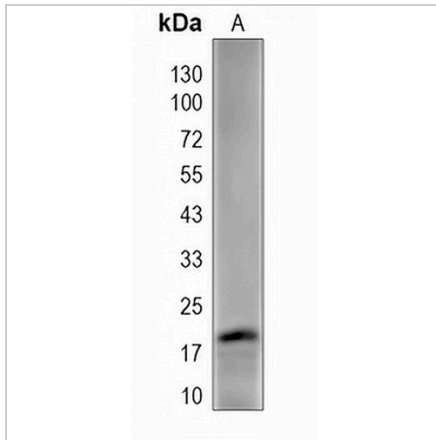
Description	Rabbit polyclonal antibody to MT-ND6
Specificity	Recognizes endogenous levels of MT-ND6 protein.
Antibody Type	Primary antibody
Immunogen	KLH-conjugated synthetic peptide encompassing a sequence within the center region of human MT-ND6. The exact sequence is proprietary.
Purification	The antibody was purified by immunogen affinity chromatography.
Molecular Weight	Predicted: 18 kD; Observed: 18 kD
Form/Buffer	Liquid in 0.42% Potassium phosphate, 0.87% Sodium chloride, pH 7.3, 30% glycerol, and 0.01% sodium azide.
Alternative Names	MTND6; NADH6; ND6; NADH-ubiquinone oxidoreductase chain 6; NADH dehydrogenase subunit 6
Gene Symbol	MT-ND6
Entrez Gene	4541(Human)
SwissProt	P03923(Human); P03926(Rat)

*AREX continuously optimizes our products. Webpage content may not reflect the latest updates. For inquiries, please contact info@arexbio.com or your local distributor.

*Clone Number, Reactivity, Source/Host and Clonality can be found in the product name and Key Features section above.

DATASHEET**MT-ND6 Rabbit Polyclonal Antibody**

CAT. NO. APA19541

DATA

Western blot analysis of MT-ND6 expression in U2OS (A) whole cell lysates. (Predicted band size: 18 kD; Observed band size: 18 kD)

STORAGE

Store at 4°C short term. For long term storage, store at -20°C, avoiding freeze/thaw cycles.

NOTE

For Research Use Only. Not for diagnostic, therapeutics, prophylactic or in vivo use.